



Stephen Shore

Vehicular & Vernacular

June 1st — September 15

RETROSPECTIVE

Stephen Shore belongs to a generation of artists for whom the road trip was particularly important. Much of his photographs were taken from a car or represents, at least, North American landscapes as seen from a moving vehicle. Stephen Shore took photographs from train windows, airplane portholes or, more recently, using drones. Thus, for half a century, he's been developing what might be described as "vehicular photography." The world is in motion, constantly changing. Those trying to capture it through photography are themselves eminently mobile.

For Shore, this movement is a strategy: it multiplies opportunities to come in contact with popular culture items so typical of the United States: gas stations, roadside shacks, billboards, etc. The "vehicular" serves the "vernacular", and it is through this dual lens that the retrospective presented at the Fondation Henri Cartier-Bresson, rich of over a hundred works, retraces Shore's career.

Exhibition curator

Clément Chéroux

Director, Fondation Henri Cartier-Bresson

EVENT

Stephen Shore in conversation with Quentin Bajac, photography historian and director of the Galerie nationale du Jeu de Paume

→ Saturday, June 1st, 2024 at 4 p.m.
At the Fondation Henri Cartier-Bresson

Paid event, booking required.

The event will be held in English and will be followed by a public opening for the Nuit Blanche 2024.

Stephen Shore *Vehicular & Vernacular*

Press images

See appendix for Stephen Shore's reproduction requirements.



01

Second Street, Ashland, Wisconsin, July 9, 1973, from the Uncommon Places, 1973-1986 series © Stephen Shore. Courtesy 303 Gallery, New York and Sprüth Magers



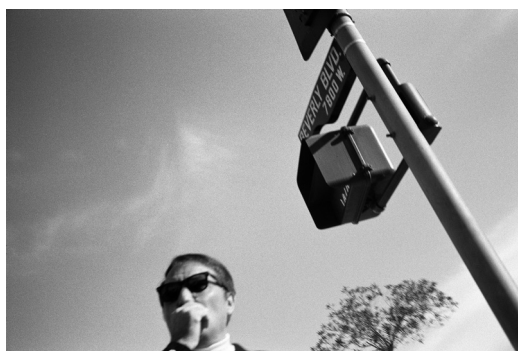
02

South of Klamath Falls, U.S. 97, Oregon, July 21, 1973, from the Uncommon Places, 1973-1986 series © Stephen Shore. Courtesy 303 Gallery, New York and Sprüth Magers



03

Los Angeles, California, February 4, 1969, from the Los Angeles, 1969 series © Stephen Shore. Courtesy 303 Gallery, New York and Sprüth Magers



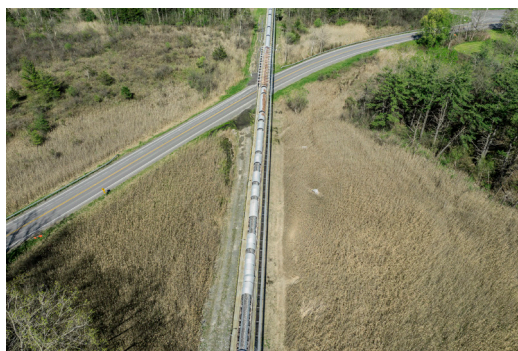
04

Los Angeles, California, February 4, 1969, from the Los Angeles, 1969 series © Stephen Shore. Courtesy 303 Gallery, New York and Sprüth Magers



05

*Meagher County, Montana, July 26, 2020
46°11.409946N 110°44.018901W, from the Aerial Surveys, 2020-2021 series © Stephen Shore. Courtesy 303 Gallery, New York and Sprüth Magers*



06

*Ravena, New York, May 1, 2021
42°29.4804217N 73°49.3777683W, from the Aerial Surveys, 2020-2021 series © Stephen Shore. Courtesy 303 Gallery, New York and Sprüth Magers*

Press release

June 1st — September 15

Stephen Shore

Vehicular & Vernacular

Press images

See appendix for Stephen Shore's reproduction requirements.



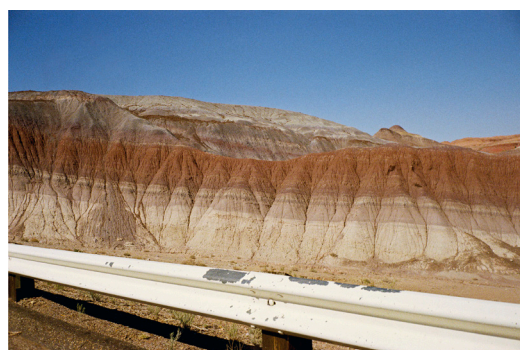
07

Polk Street. 1971, from the *Greetings from Amarillo*, «*Tall in Texas*», 1971 series © Stephen Shore. Courtesy 303 Gallery, New York and Sprüth Magers



09

Amarillo, Texas, July 1972, from the *American Surfaces 1972-73* series © Stephen Shore. Courtesy 303 Gallery, New York and Sprüth Magers



08

U.S 89, Arizona, June 1972, from the *American Surfaces 1972-73* series © Stephen Shore. Courtesy 303 Gallery, New York and Sprüth Magers



10

Beverly Boulevard and La Brea Avenue, Los Angeles, California, June 21, 1975, from the *Uncommon Places, 1973-1986* series © Stephen Shore. Courtesy 303 Gallery, New York and Sprüth Magers

Press contact

Julia Pecheur

Communications, press and events

julia.pecheur@henricartierbresson.org

79 rue des Archives, 75003 Paris

+33 (0)1 40 61 50 60

79 rue des Archives, 75003 Paris

+33 (0)1 40 61 50 50

henricartierbresson.org

@FondationHCB



Tuesday — Sunday: 11 a.m. — 7 p.m.

Full rates 10 € / Concessions 6 €

STEPHEN SHORE

CONDITIONS FOR REPRODUCTION OF PHOTOGRAPHS

You have requested permission to reproduce specific photographs copyrighted by Stephen Shore. The following conditions apply to all reproductions of the requested photographs unless otherwise agreed in writing by Stephen Shore or one of his representatives (see below for list of contacts)

1. No photographs may be cropped.
2. No type or design material may be imposed over any photograph.
3. No photograph may be printed across multiple pages (across the gutter of the publication). Publications with foldouts will be considered for multi-page layouts, but must be approved of by Stephen Shore, or one of his representatives.
4. There is to be no manipulation by electronic or other means of any photograph, this includes visual manipulation or changes in aspect ratio.
5. Photographs being reproduced from Stephen Shore's "American Surfaces" series may not be printed larger than 4 x 6 inches (10.16 x 15.24 cm) without being approved by Stephen Shore, or one of his representatives.
6. Attribution of all reproductions is to be by means of the following credit line:
"© Stephen Shore. Courtesy 303 Gallery, New York and Sprüth Magers"
7. Copies of the publication are to be delivered directly to Stephen Shore.
 - For digital publications, please send both a PDF and a direct link of the published work to:
sshore32@icloud.com
 - For physical publications, please send two copies of the published work, to the following mailing address:

Stephen Shore
Bard College
30 Campus Road
Annandale on Hudson, NY 12504
USA
8. Unless otherwise specified in writing, the reproduction rights granted are for one time only. Copyright of the photographs and captions belong to Stephen Shore and are not sold.

Should you wish to vary any of these conditions please contact Stephen Shore's studio at:
sshore32@icloud.com

Authorized Representatives for Stephen Shore:

Studio Manager:

Laura Steele
steele.laura@gmail.com
845-399-3948

Gallery Representation:

303 Gallery, New York
INFO@303GALLERY.COM
(212) 255-1121

Sprüth Magers, London/Berlin
Andrew Silewicz
as@spruethmagers.com
+44 20 7408 1613